

Budget Estimate (Purchase)
GridBee GS Series Electric Potable Water Tank Mixers
 Last Updated: January 1, 2019 - Note: International Pricing Will Vary

Performance Guaranteed or your Money Back. The GS Mixers are the most effective and competitively priced mixers on the market, with the lowest life cycle cost and the best warranty. Specifications are available at www.MedoraCo.com
 Installing the mixer is well within the capabilities of most cities and contractors. Usually the unit is installed directly under the hatch, no need to center it in tank. A GS Series Electric Mixer 11 minute Installation Video is available at: <http://potablewater.medoraco.com/mixers/gridbee-electric>

Description	GS-12	GS-9
GS Submersible Electric Mixer: with 75 ft of in-tank submersible electrical cable	\$9,780	\$7,300
GS Submersible Electric Mixer: with 150 ft of in-tank submersible electrical cable	\$10,180	\$7,700
Freight cost for each basic system:	\$100	\$80
Horsepower, Voltage, Phase: GS Mixers are available on request at the same price: 240vAC 1PH and 460vAC 3PH	0.50 hp, 120vAC, 1PH Other voltage / ph available	
Mixer length x diameter, inches: 12" or larger hatch size required, no need to enter or drain the tank	36" x 10"	24" x 10"
Weight: submersible mixer only	75 lbs	65 lbs
Maximum recommended tank volumes for moderate conditions: * The GS-12 is recommended for higher turnover rate, or ice issues, or areas with high heat.	8 MG (million gallons)	3 MG (million gallons)

Options

Mix-Guard Replacement Program: Covers beyond the warranty, it replaces the mixer for Acts of God, lightning, vandalism, power problems, handling damage or any other issue.
Annual Cost: While in 5 year warranty: GS-12 \$500, GS-9 \$400 - When beyond the 5 year warranty: GS-12 \$900, GS-9 \$750

Chemical injection interior hose: per 100 ft	\$250
Chemical injection exterior hose: per 50 ft SS braided hose w/ quick connect	\$400
Chemical injection hose penetration thru fitting: for steel tanks	\$460
Control Box A (120v): UL listed, NEMA 4X, 120vAC/1ph, with SCADA monitoring, HOA switch, indicator light, locking latch	\$1,200 Shipped with mixer for electrical contractor installation
Control Box B (120v) : UL listed, NEMA 4X, 120vAC/1ph, w/ timer but No SCADA, on/off switch, indicator light, locking latch	\$800 Shipped with mixer for electrical contractor installation
Control Box A (240v): UL listed, NEMA 4X, 240vAC/1ph, with SCADA monitoring, HOA switch, indicator light, locking latch	\$1,430 Shipped with mixer for electrical contractor installation
Factory Delivery and Placement: Installing the above mixer is within the scope of work that most cities and contractors can perform	\$13,000 Varies with tank height and tank construction
STH-8400 Submersible Electric Potable Water Tank Heater: 316 SS, includes a control panel, float switch, 50' of electrical cable, chain, etc. Fits through 12" or larger roof opening. Nominal 240VAC/1PH	\$7,220 + \$100 Freight Typically used in cold climates when the tank has less than 10% turnover
Portable Disinfectant Boost System: An electric or engine-driven air compressor (4 cfm @ 60 psi) is required to operate the air-powered diaphragm pump; air compressor is not included	\$8,990 FOB Factory

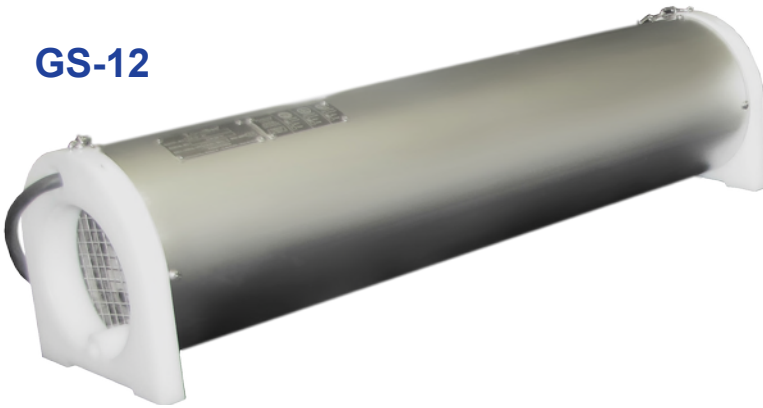




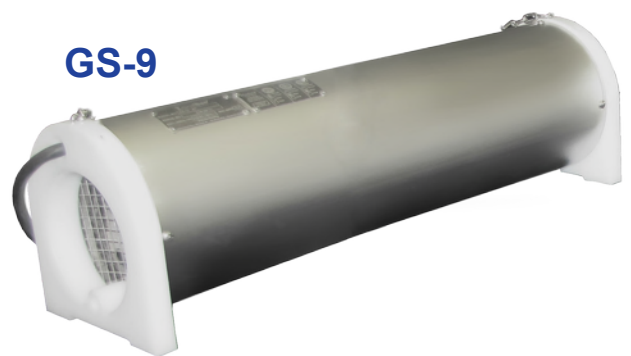
GS Electric Mixers

Effective. Efficient. Affordable.

GS-12



GS-9



Benefits

- Active mixing 24 hours a day
- Creates a consistent mix & water age surface to floor
- Ensure uniform disinfectant distribution
- Minimize chemical disinfectant usage & disinfection by-products
- Eliminate ice damage to tanks in cold climates
- Reduce nitrification in chloraminated systems
- Prevent stagnation, thermal stratification, and short-circuiting
- Eliminate energy intensive & costly deep-cycling and/or flushing of tanks
- Lowest life-cycle cost
- 5-year warranty
- Installation & other videos available on YouTube

Features

- Engineered for easy deployment. Everything you need is in the box!
- No tank entry required
- Quiet operation
- Utilizes efficient sheet mixing technology
- SCADA control panels available
- Liquid disinfectant boosting port
- 316SS Construction



Best Warranty in The Industry!

Medora Corporation **GridBee SolarBee**

www.medoraco.com | 866-437-8076 | info@medoraco.com



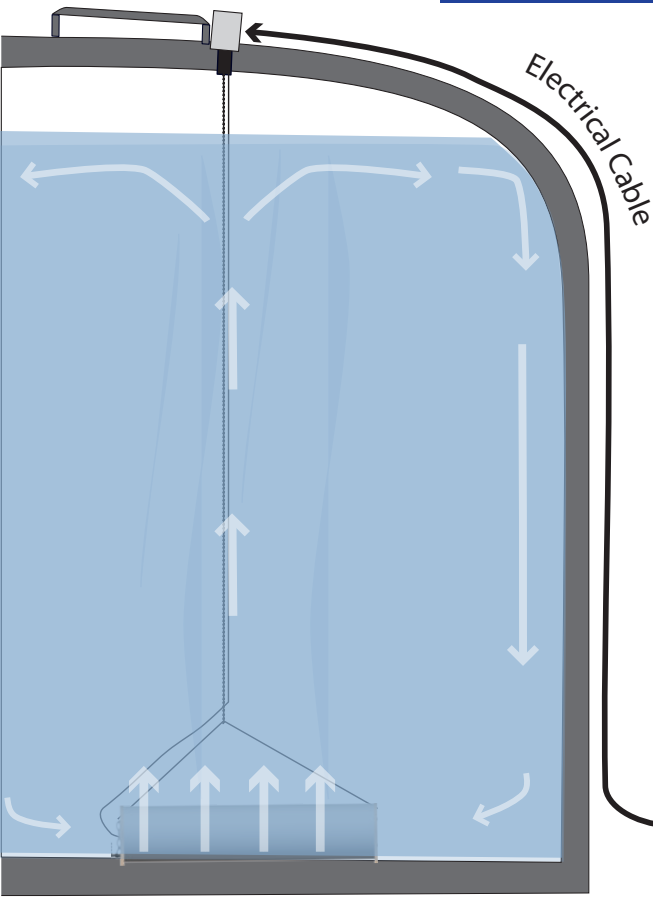
GS Electric Mixers

Overview

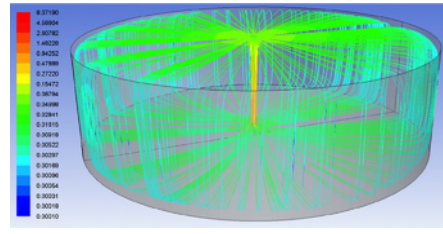
GridBee GS Mixers are easily installed through a 12 inch diameter or larger hatch or other tank opening. They thoroughly mix the entire tank volume from the tank floor to the water surface resulting in consistent disinfectant residuals, even temperature profiles, and uniform water age.

Everything Needed for a Fast & Efficient Deployment is Included!

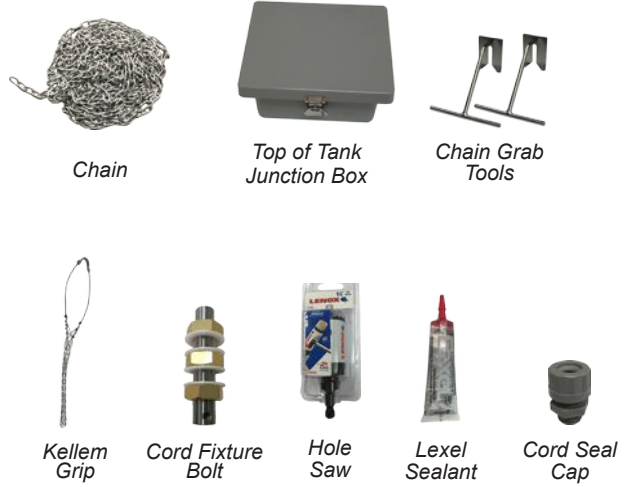
Watch GridBee GS-12 Installation Video on YouTube!



Not to Scale



CFD Model



Specifications

GS-12	Assembled machine is 3 ft (0.9 m) long X 10 inch (25.4 cm) in diameter and weighs 75 lbs (34 kg).
GS-9	Assembled machine is 2 ft (0.6 m) long X 10 inch (25.4 cm) in diameter and weighs 65 lbs (34 kg).

Medora Corporation

www.medoraco.com | 866-437-8076 | info@medoraco.com

